



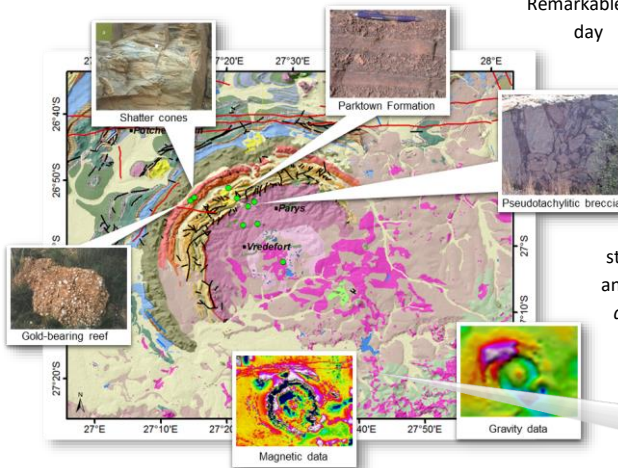
# SAGA 2017

15<sup>th</sup> Biennial Conference & Exhibition  
 10 – 13 September 2017  
 The Lord Charles | Cape Town

## Tours & Field Trips

The 15<sup>th</sup> SAGA Biennial Conference & Exhibition is to be exceptional as always. Embracing the theme of *Expanding Frontiers*, experts will be sharing novel methods and applications related to the field of geophysics in a number of fascinating, not-to-be-missed tours.

### Think BIG, Think OLD, the largest and oldest known impact structure just outside of Johannesburg – Vredefort!



Remarkable examples of pseudotachylitic breccia at the Salvamento quarry will start the day off in a spectacular fashion. We will drive through the overturned Witwatersrand Supergroup and see the magnetic Parktown Formation of the lower Witwatersrand Supergroup. Moving higher up in the Witwatersrand Supergroup will bring us to the gold-bearing reefs of the Kimberley Formation and shatter cones in the Booyensens Shale Formation, evidence of the catastrophic event 2 020 million years ago. The excursion will then take us out of the magnetic and gravity anomalies of the Wits rocks, and into the outer core of the impact structure. Here the gravity values are lower and a strong negative magnetic anomaly has been the focus of intense palaeomagnetic studies (*e.g. Salminen et al., 2009, Prec.Res. 168*). Crossing the transition zone between the central and outer core of the dome, a hotly debated topic, will lead us to a point where we can look out over the gravity high at the centre of the impact crater

**1 night R2 630 (VAT incl.) / 2 nights R3 630 (VAT incl.)  
 17:30 14<sup>th</sup> – 17:30 15<sup>th</sup> Sep, Includes: Accommodation (bed & breakfast), lunch, gratuities & guide (Ex-JHB)**

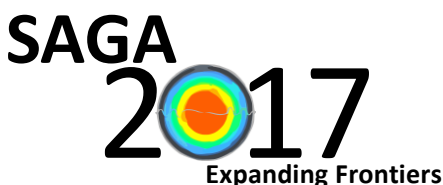
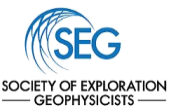
### Looking for SCENIC, look no further than the Cape Peninsula!

This excursion takes you to the most scenic outlooks in the Cape Town area to give an overview of the landforms and geology both of which are spectacularly on display. We will first get an overview from Signal Hill of the city and its surrounding geology. We will then descend to the Atlantic seaboard to see the Sea Point Contact. At the Sea Point Contact you can see mixing of granite magma and the host shale of the Precambrian Malmesbury Group; long a key exposure to geology and made famous by Darwin's visit in 1836. We then go to Hout Bay Beach and Chapman's Peak Drive to see weathered granite, dolerite dykes and beautifully exposed mudstone and sandstone rocks of the lowermost Table Mountain Group (Cambrian/Ordovician). We then travel to the southernmost tip of the Cape Peninsula to the Cape of Good Hope and the Cape Point Lighthouse. From there we head up the eastern edge of the Cape Peninsula to Boulders Beach to see the penguin colony. In addition to the geology, the trip will include aspects of landscape evolution, plants of the unique and diverse fynbos floristic region and the history of geology.



**R1 480 (VAT incl.), 14<sup>th</sup> Sep 8:00 – 18:00  
 Includes: Guide, transport, lunch, entrance fees, booklet and gratuities**

Partner Associations



www.sagaconference.co.za  
 info@sagaconference.co.za